



BRIGHT
HORIZON
ACADEMY

PGA April 2019

Vision & Mission

The mission of Bright Horizon Academy is to facilitate the intellectual, psychological, physical, and spiritual development of all of its students within a supportive, nurturing environment. The school is committed to ensuring that learning occurs for all students and to including all stakeholders in a team approach to accomplish this goal. We endeavor to produce students that will contribute positively to humanity and the global environment.

Board Members

- Tamer Kadous - Chair
 - Tauseef Kazi - Vice-Chair
 - Futema Jafri - Treasurer
 - Mohammad Khan - Secretary
 - Mohamed Kadry
 - Ahmed Youssef
 - Vacant
-
- Email: issd-boe-feedback@yahoogroups.com

Now in 2018-19

Now in 2018-19

- Moved middle school to Allied Gardens
- Started HS program with 9th grade
- WASC accreditation secured for TK & HS, expect 6 years renewal for KG-8th
- Got federal grant of \$105k to improve security
- Several awards in science fair and robotics competition



Bright Horizon Academy

Congratulations

Sweepstakes Award (the top 4 projects out of 950)

Haya Belbese

Qualified to Compete at Armed Forces Communications and Electronics Association Fair
(top 10 engineering projects from the county):

- 1-Ayat Alwazir
- 2-Mohammad Ibrahim Khan
- 3-Adam Abdelaal

Advanced to compete at the state level:

- 1-Farah Aswad
- 2- Rozita Kareem
- 3-Solaiman Alwazir
- 4-Ayat Alwazir
- 5-Noorah Dhamim
- 6-Haya Belbese
- 7-Mumtaz Elmi
- 8-Shukriya Usman
- 9-Ayaan Bhatkar
- 10-Danna Bundogji

WASC Quality Assurance Team



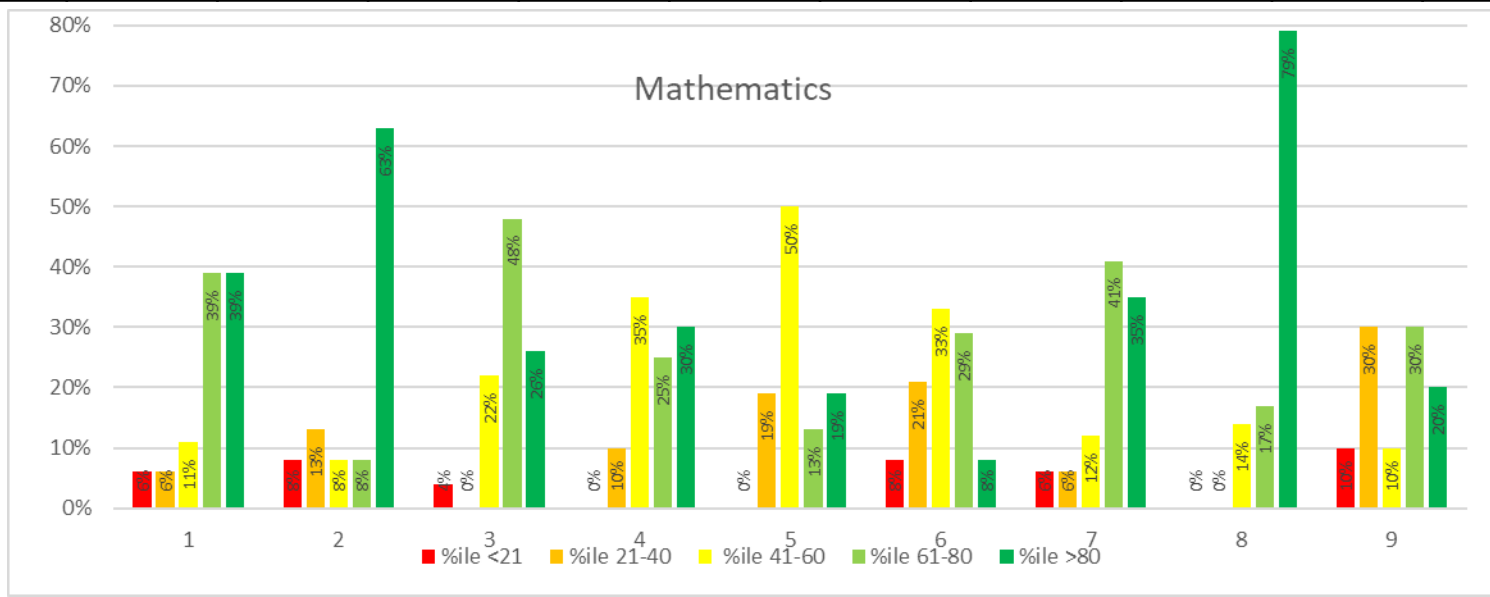
“I would like to congratulate all of you as a community about how your school is blending Islamic principles into daily school life. It was very clear and evident that it is part of your purpose and you are actively doing it throughout the entire day, everyday, and we saw that.”

In regards to best practices “every single classroom that we went into we saw differentiation and we know that there has been professional development in that area. It was really inspiring to be able to see the teachers doing their best jobs and meeting the needs of a variety of students and we saw it in every single class we visited.”

MAP test results (Mathematics)



Mathematics										
Grade Level	Low		LoAve		Ave		HiAve		Hi	
	%ile <21		%ile 21-40		%ile 41-60		%ile 61-80		%ile >80	
	Count	%	Count	%	Count	%	Count	%	Count	%
1	1	6%	1	6%	2	11%	7	39%	7	39%
2	2	8%	3	13%	2	8%	2	8%	15	63%
3	1	4%	0	0%	5	22%	11	48%	6	26%
4	0	0%	2	10%	7	35%	5	25%	6	30%
5	0	0%	3	19%	8	50%	2	13%	3	19%
6	2	8%	5	21%	8	33%	7	29%	2	8%
7	1	6%	1	6%	2	12%	7	41%	6	35%
8	0	0%	0	0%	2	14%	1	17%	11	79%
9	1	10%	3	30%	1	10%	3	30%	2	20%



MAP test results (Reading)



**BRIGHT
HORIZON
ACADEMY**

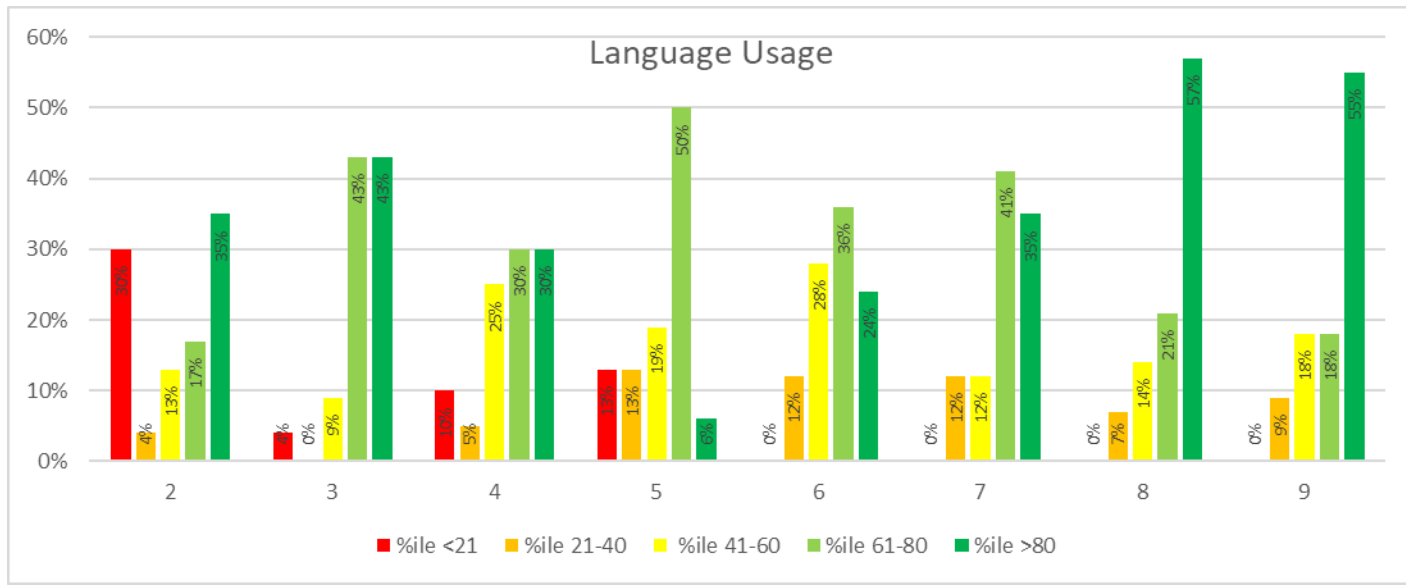
Reading										
Grade Level	Low		LoAve		Ave		HiAve		Hi	
	%ile <21		%ile 21-40		%ile 41-60		%ile 61-80		%ile >80	
	Count	%	Count	%	Count	%	Count	%	Count	%
1	0	0%	1	6%	3	18%	3	18%	10	59%
2	1	4%	7	30%	2	9%	4	17%	9	39%
3	2	8%	1	4%	4	17%	7	29%	10	42%
4	1	5%	4	20%	2	10%	7	35%	6	30%
5	2	13%	3	19%	4	25%	5	31%	2	13%
6	0	0%	3	13%	3	13%	12	50%	6	25%
7	0	0%	2	13%	2	13%	6	38%	6	38%
8	0	0%	1	8%	1	8%	2	15%	9	69%
9	0	0%	1	9%	1	9%	5	45%	4	36%



MAP test results (Language Usage)



Language Usage										
Grade Level	Low		LoAve		Ave		HiAve		Hi	
	%ile <21		%ile 21-40		%ile 41-60		%ile 61-80		%ile >80	
	Count	%	Count	%	Count	%	Count	%	Count	%
2	7	30%	1	4%	3	13%	4	17%	8	35%
3	1	4%	0	0%	2	9%	10	43%	10	43%
4	2	10%	1	5%	5	25%	6	30%	6	30%
5	2	13%	2	13%	3	19%	8	50%	1	6%
6	0	0%	3	12%	7	28%	9	36%	6	24%
7	0	0%	2	12%	2	12%	7	41%	6	35%
8	0	0%	1	7%	2	14%	3	21%	8	57%



Upcoming 2019-20 Plans

- High School Expansion 10th grade
 - Curriculum & Staffing
 - Student Programs
 - UCSD, SDSU, Cal-State Accreditation
- Extending Transportation to and from MCC
- Offering daycare and KG in Allied Gardens facility if appropriate
- Implementing security grant projects
- Necessary Facility improvements

Financial challenges

- Hiring top credentialed teachers and staff is by far the largest financial investment
- Negative cash flow until enrollment reaches sustained levels
- Enrollment growth is essential to achieve sustainability
- Mortgage loan payment of ~\$175,000

Financial forecast for next 4 years



	<u>2018-19</u> (TK-9th)	<u>2019-20</u> (TK-10th)	<u>2020-21</u> (TK-11th)	<u>2021-22</u> (TK-12th)	<u>2022-23</u> (TK-12th)
Expenses					
Mortgage payment	\$175,200	\$175,200	\$175,200	\$175,200	\$175,200
Payroll (full time, security, handyman, custodian, Noha, etc)	\$1,343,722	\$1,459,034	\$1,552,805	\$1,649,389	\$1,698,870
Capital expense (Construction, bus, furniture, computers, lb, TV, e	\$242,500	\$22,500	\$23,175	\$23,870	\$24,586
School Operation	\$212,043	\$218,404	\$224,956	\$231,705	\$238,656
Total Expenses	\$1,973,465	\$1,875,138	\$1,976,136	\$2,080,164	\$2,137,313
Income					
Enrollment	225	250	275	300	325
Tuition	\$630	\$660	\$700	\$700	\$700
Misc income	\$20,000	\$20,600	\$21,218	\$21,855	\$22,510
Tuition Income	\$1,261,575	\$1,468,500	\$1,713,250	\$1,869,000	\$2,024,750
Total Income	\$1,281,575	\$1,489,100	\$1,734,468	\$1,890,855	\$2,047,260
Net Balance for each school year					
Bank balance at the start of school year	\$752,153	\$260,263	\$74,225	\$32,557	\$43,247
P&L	-\$691,890	-\$386,038	-\$241,668	-\$189,310	-\$90,053
Donations	\$200,000	\$200,000	\$200,000	\$200,000	\$200,000
Net balance at the end of school year	\$260,263	\$74,225	\$32,557	\$43,247	\$153,194

Q&A